

## **The Society & College of Radiographers**

### **Sample decision flow chart - (conscious and unconscious patient).**

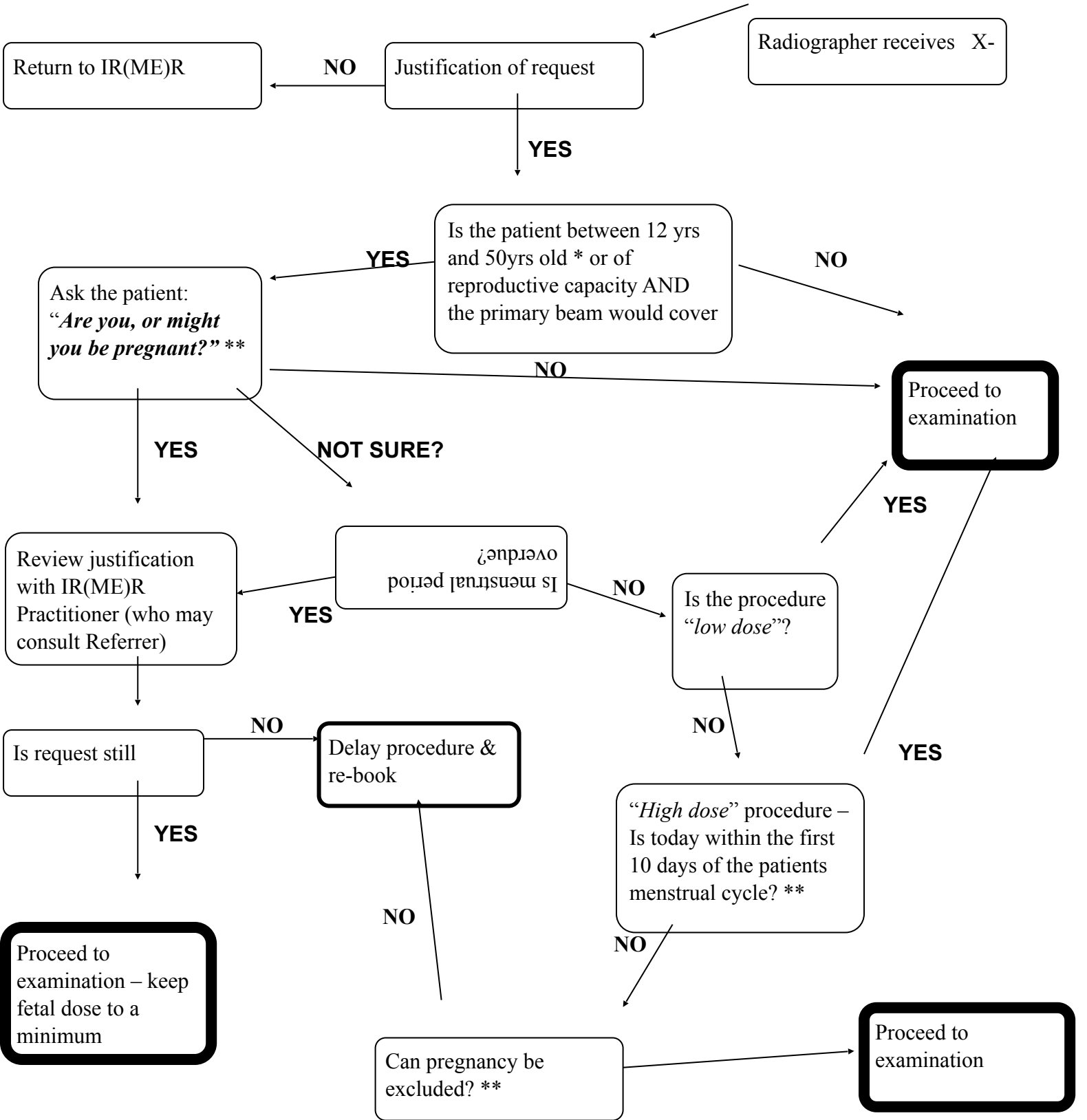
The attached decision flow chart has been designed to aid in the decision making process of checking the pregnancy status in women of reproductive capacity who attend for diagnostic medical exposure to ionizing radiations.

The flow charts, with their subsequent decisions, mirrors the practical guidance given in the March 2009 guidance document entitled “*Protection of Pregnant Patients during Diagnostic Medical Exposures to Ionising Radiation*” (written by the Health Protection Agency in collaboration with The Royal College of Radiologists and the College of Radiographers) ISBN 978-0-85951-635-8. See this document at [https://www.sor.org/system/files/document-library/members/sor\\_RCE-9\\_for\\_web\\_v2\\_April\\_2009.pdf](https://www.sor.org/system/files/document-library/members/sor_RCE-9_for_web_v2_April_2009.pdf)

Radiographers are strongly advised to make themselves aware of the both the scientific and practical guidance within the publication before adopting the flow chart(s) within local departments.

Responsible Officer: **Maria Murray** ( [MariaM@sor.org](mailto:MariaM@sor.org) ), March 2009

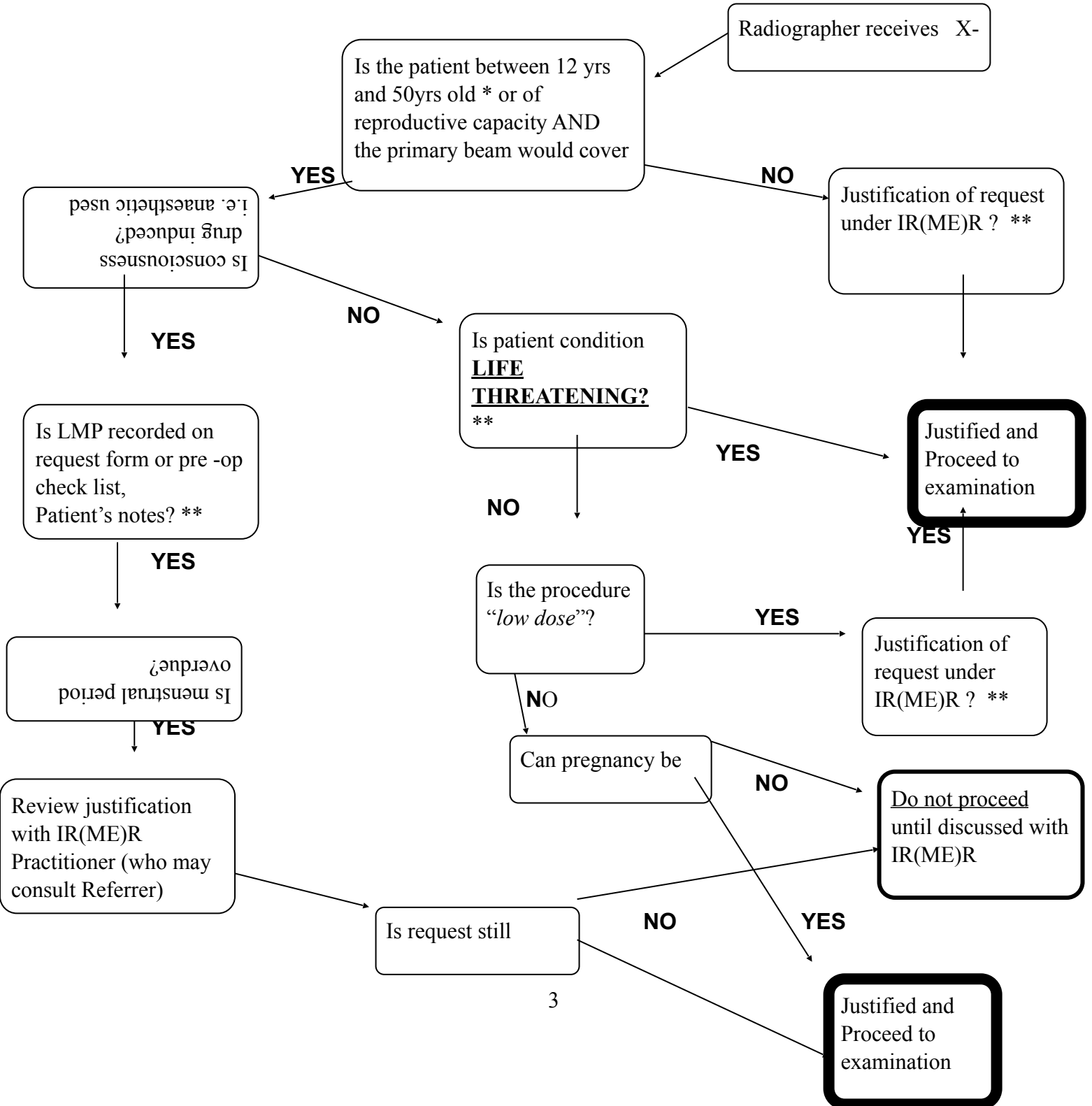
(i) Sample flow chart for checking pregnancy status in women of reproductive capacity who attend for diagnostic medical exposure to ionizing radiations (conscious patient).



YES

- \* - age range by local agreement and reviewed regularly
- \*\* - Record patient responses according to local procedure

(ii) Sample flow chart for checking pregnancy status in women of reproductive capacity who attend for diagnostic medical exposure to ionizing radiations (unconscious patient).



**YES**

- \* - age range by local agreement and reviewed regularly
- \*\* - Record patient responses according to local procedure